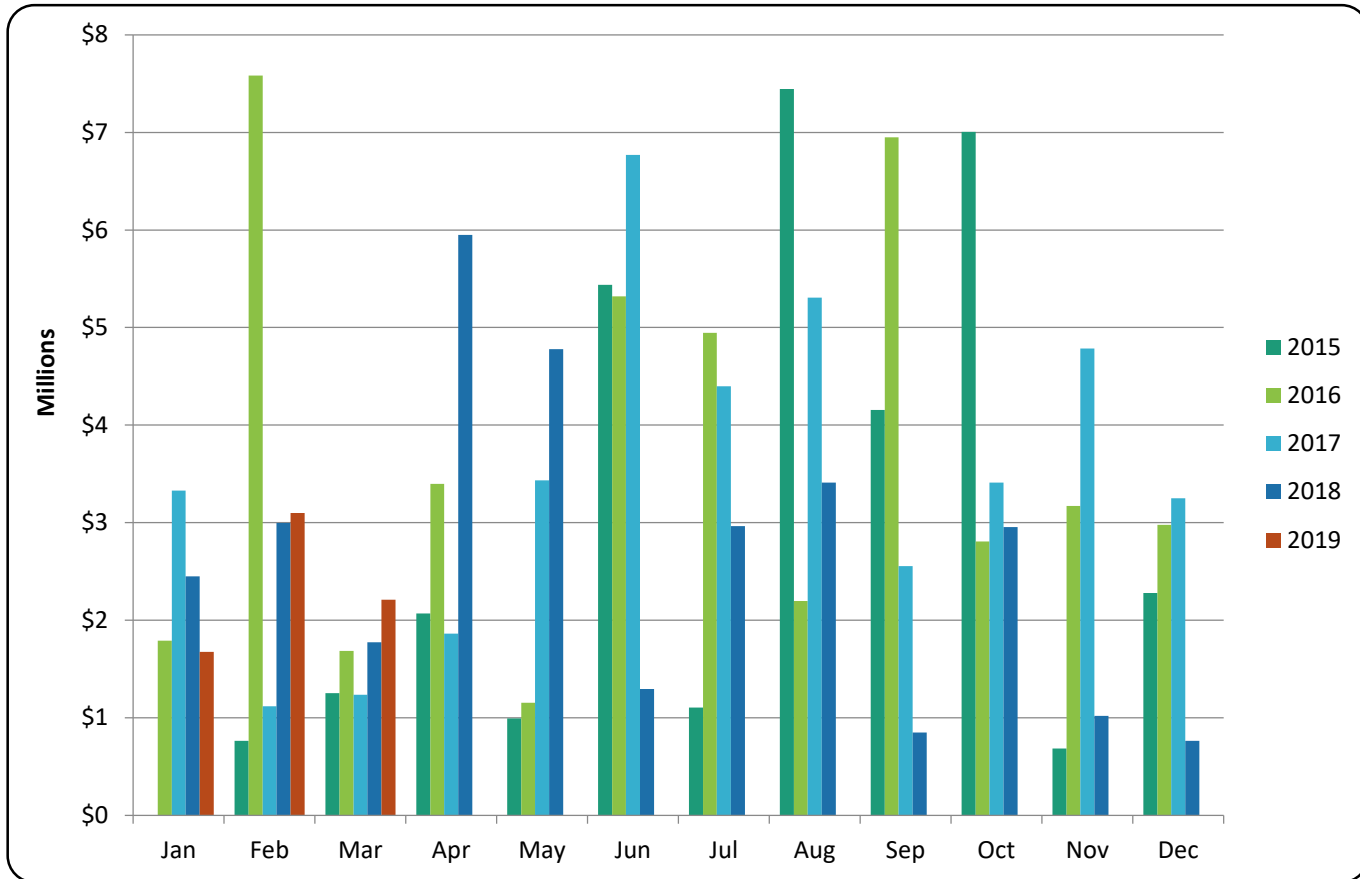


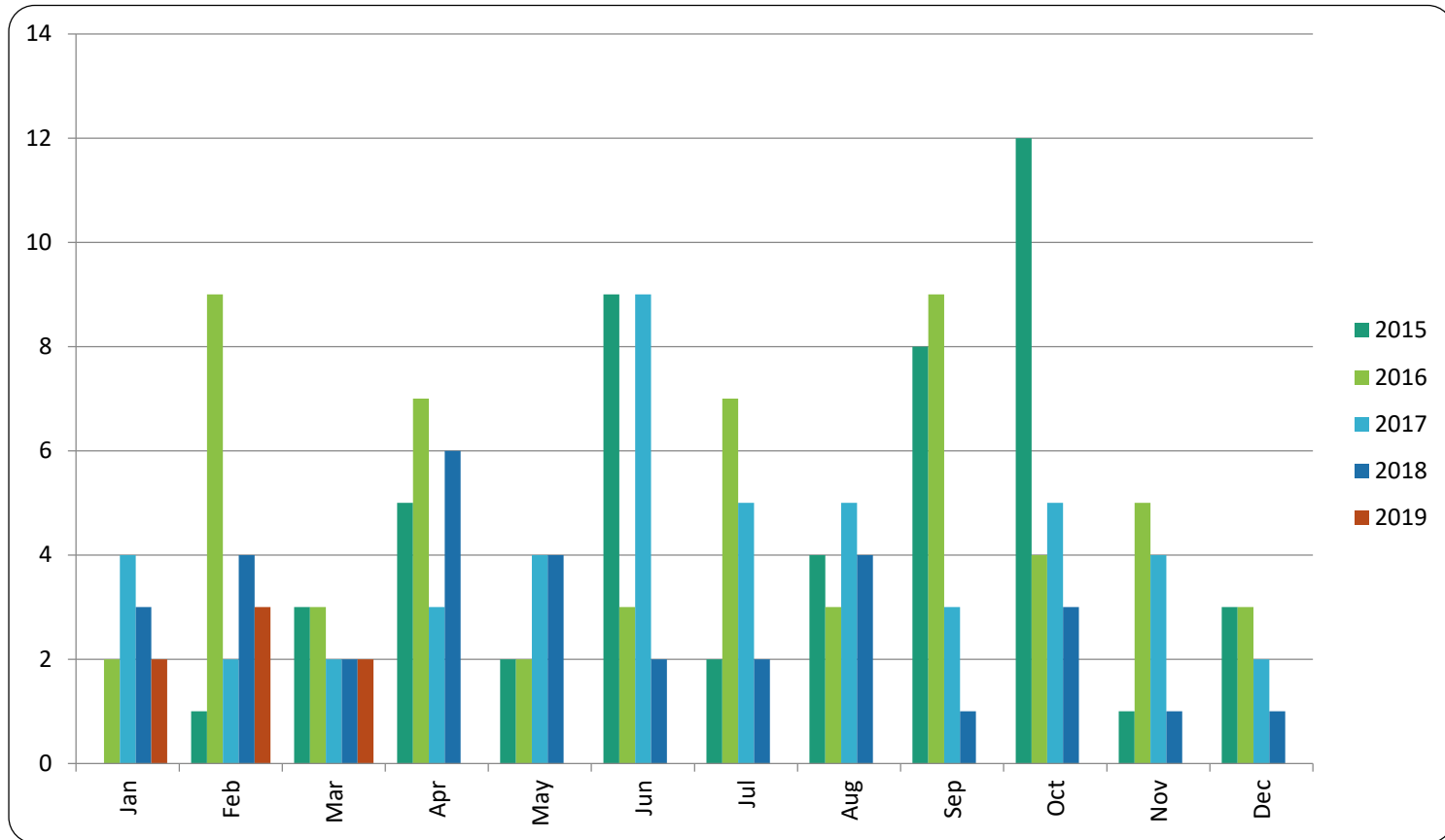


RE/MAX
SEA TO SKY
REAL ESTATE
INDEPENDENTLY OWNED AND OPERATED

Pemberton Chalets - \$ Volume

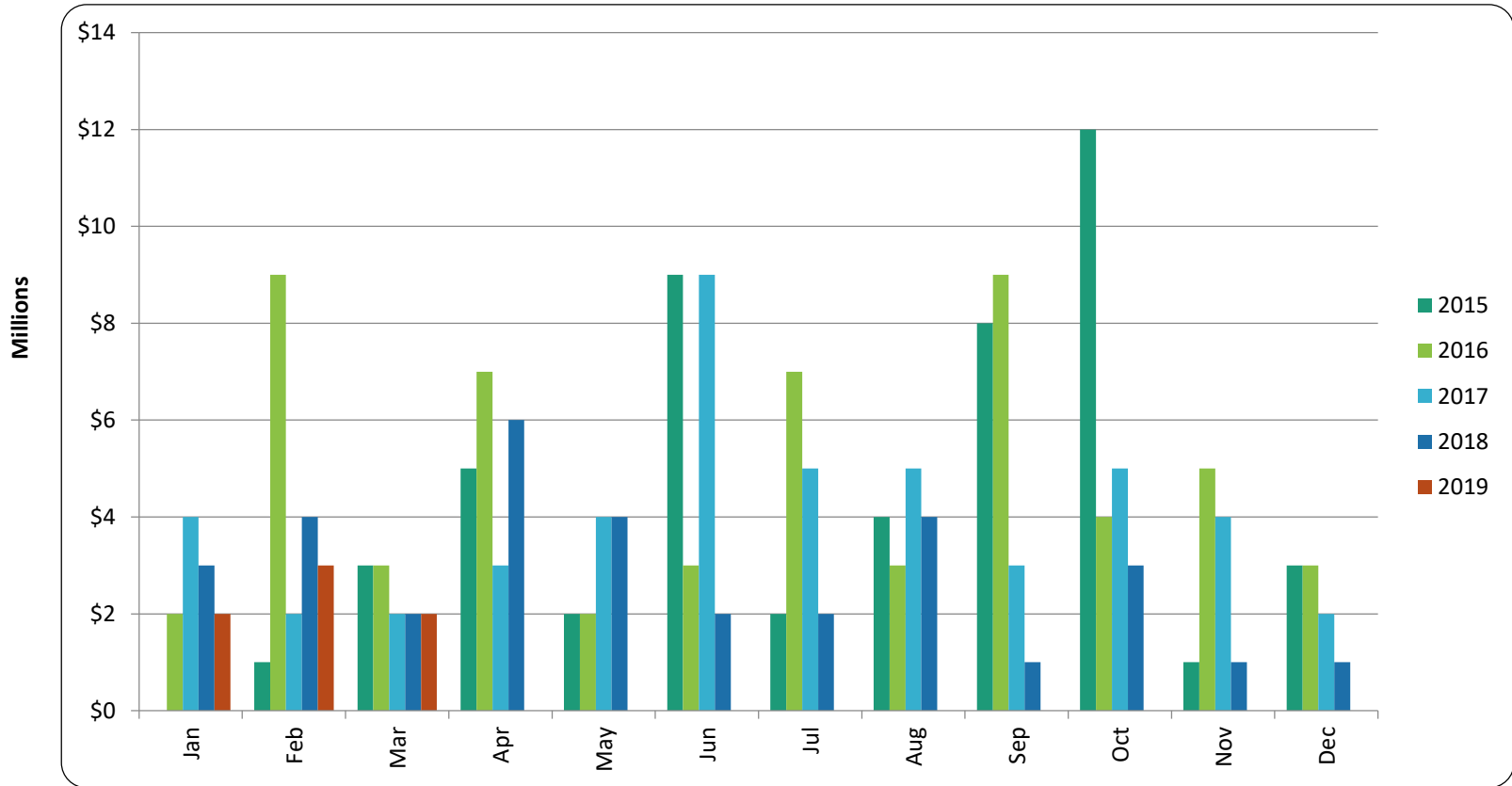


Pemberton Chalets - Transactions



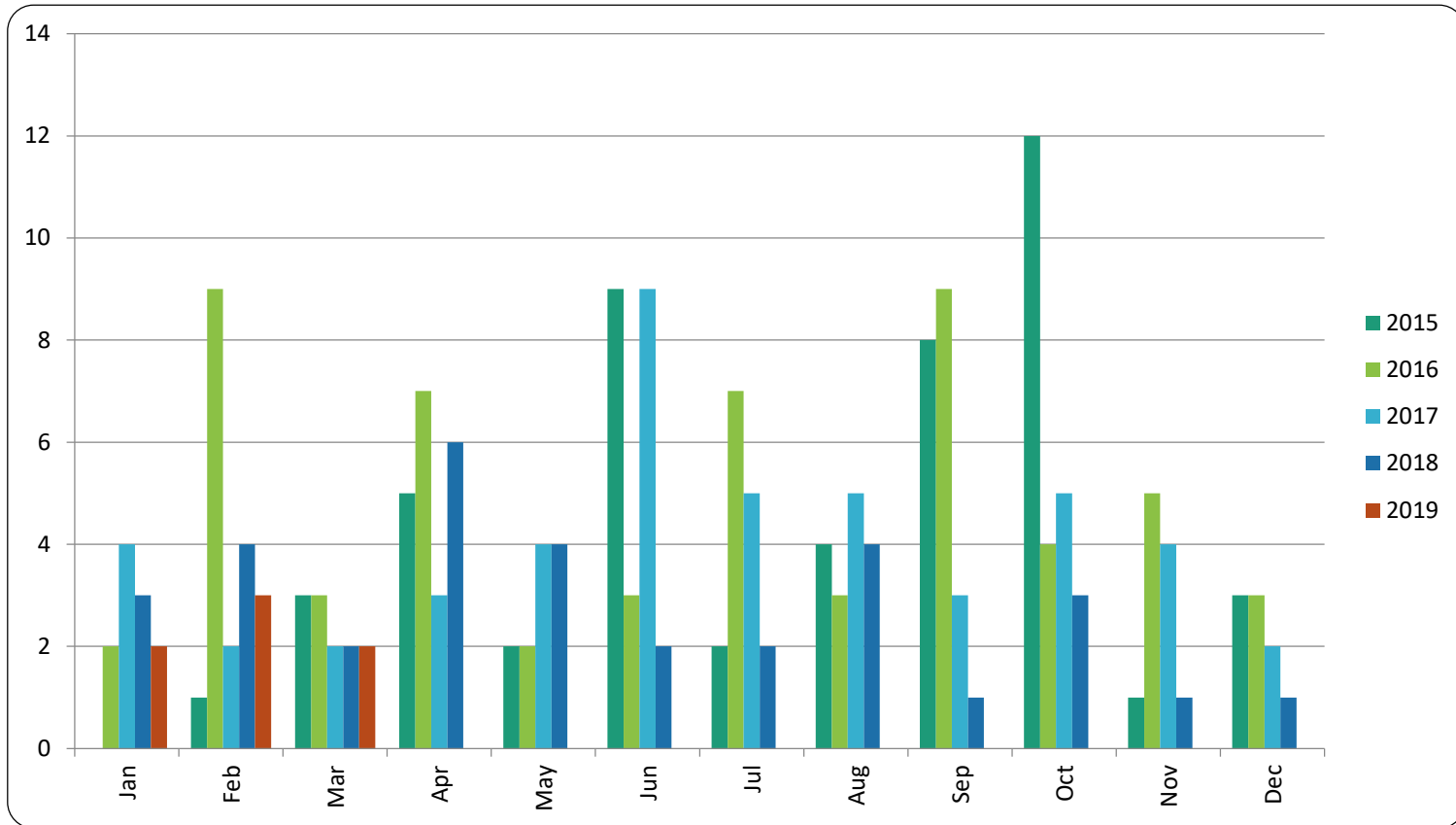


Pemberton Condos - \$ Volume



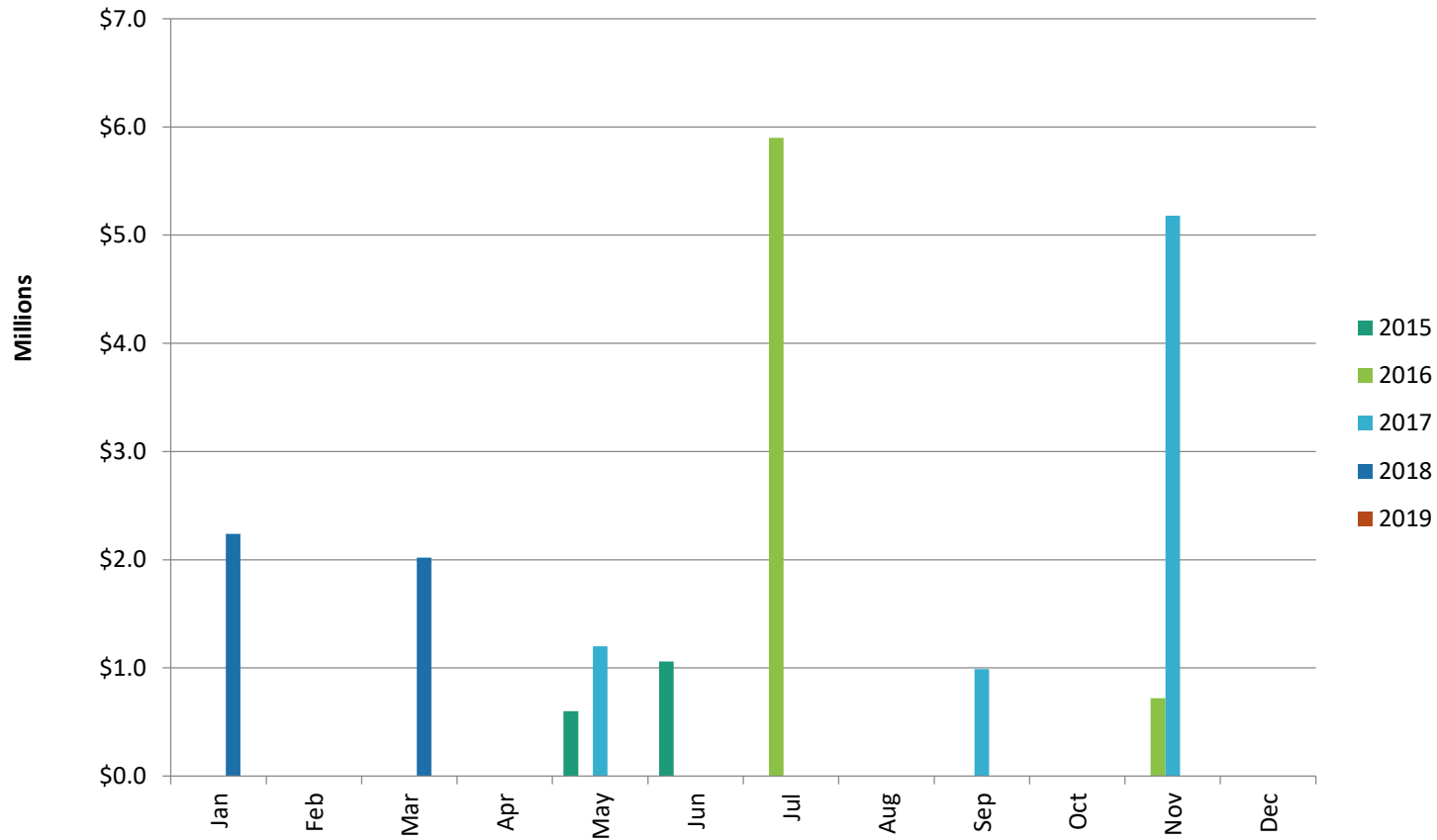


Pemberton Condos - Transactions

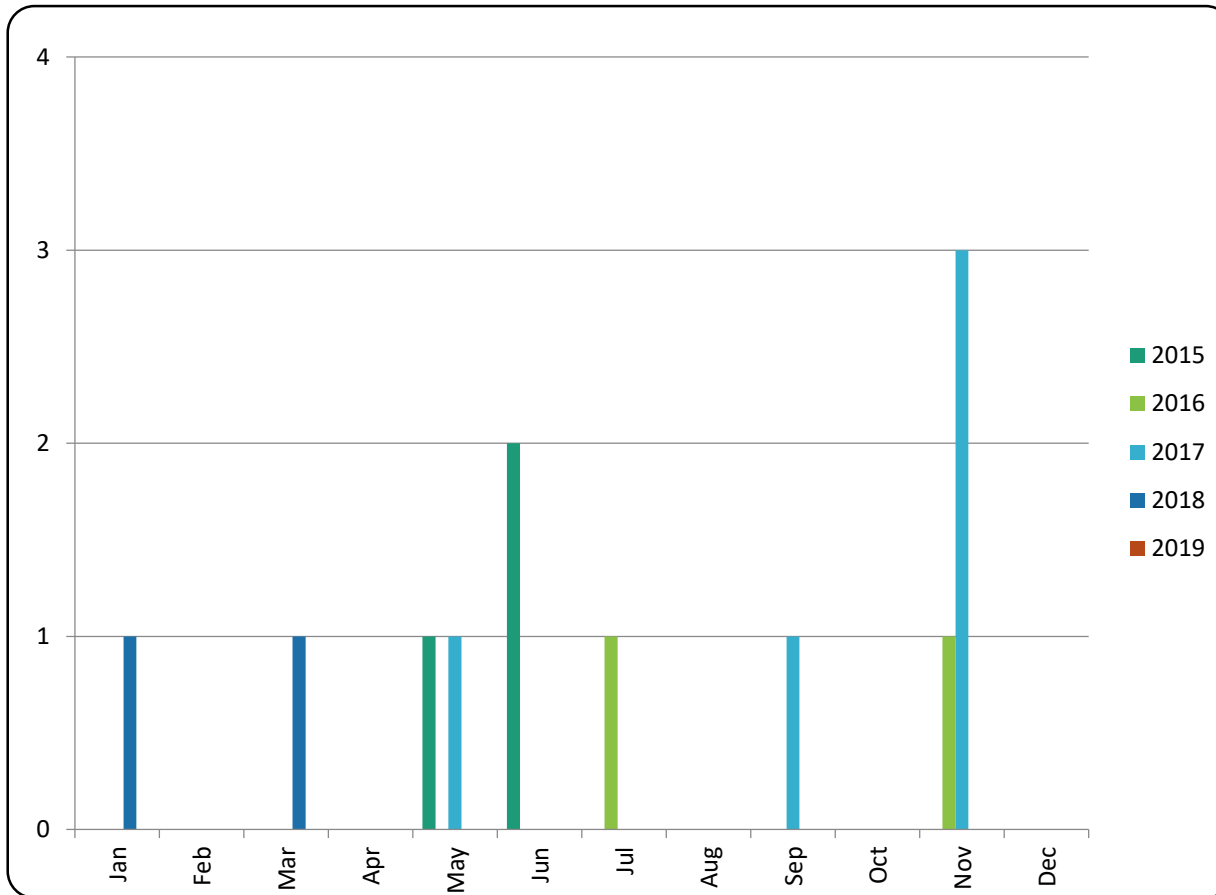




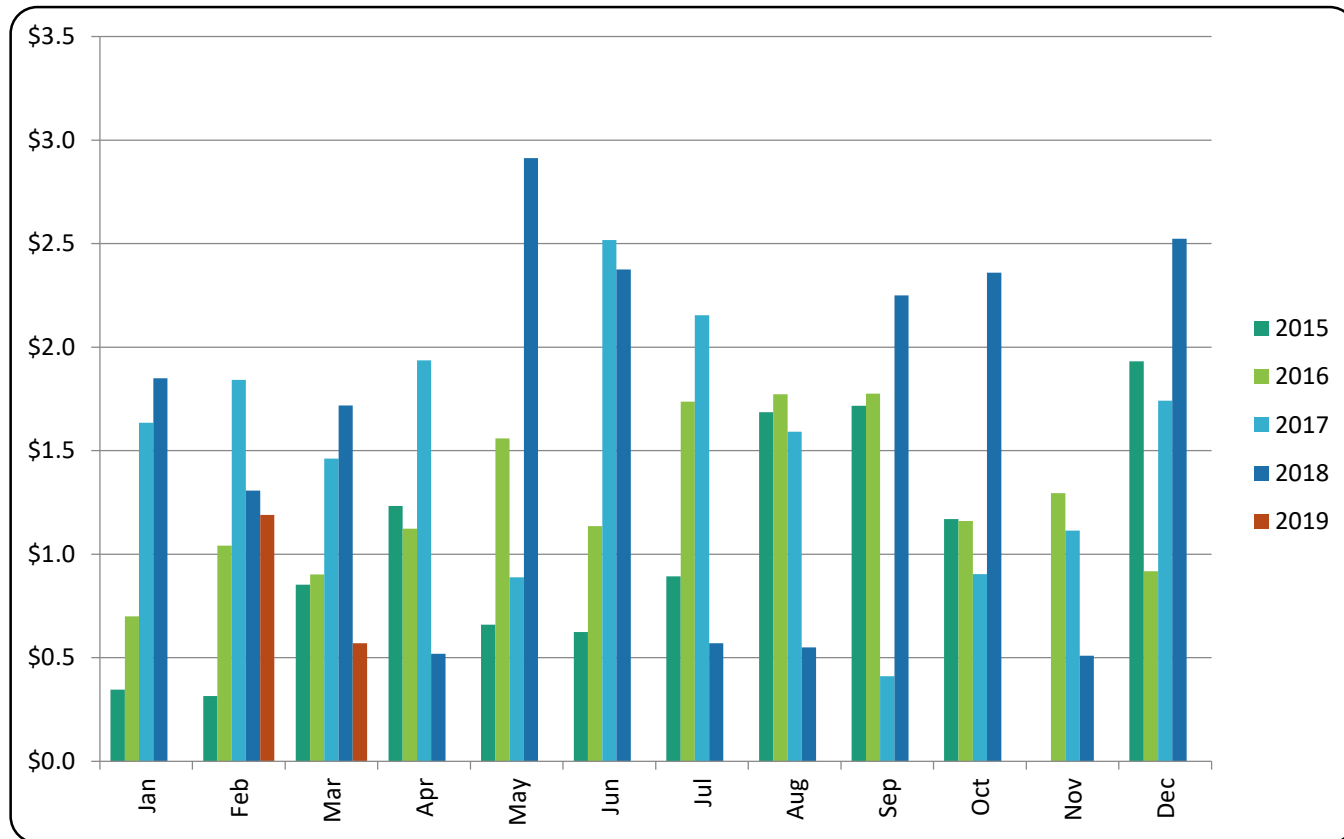
Pemberton Mobile Homes - \$ Volume



Pemberton Mobile Homes - Transactions

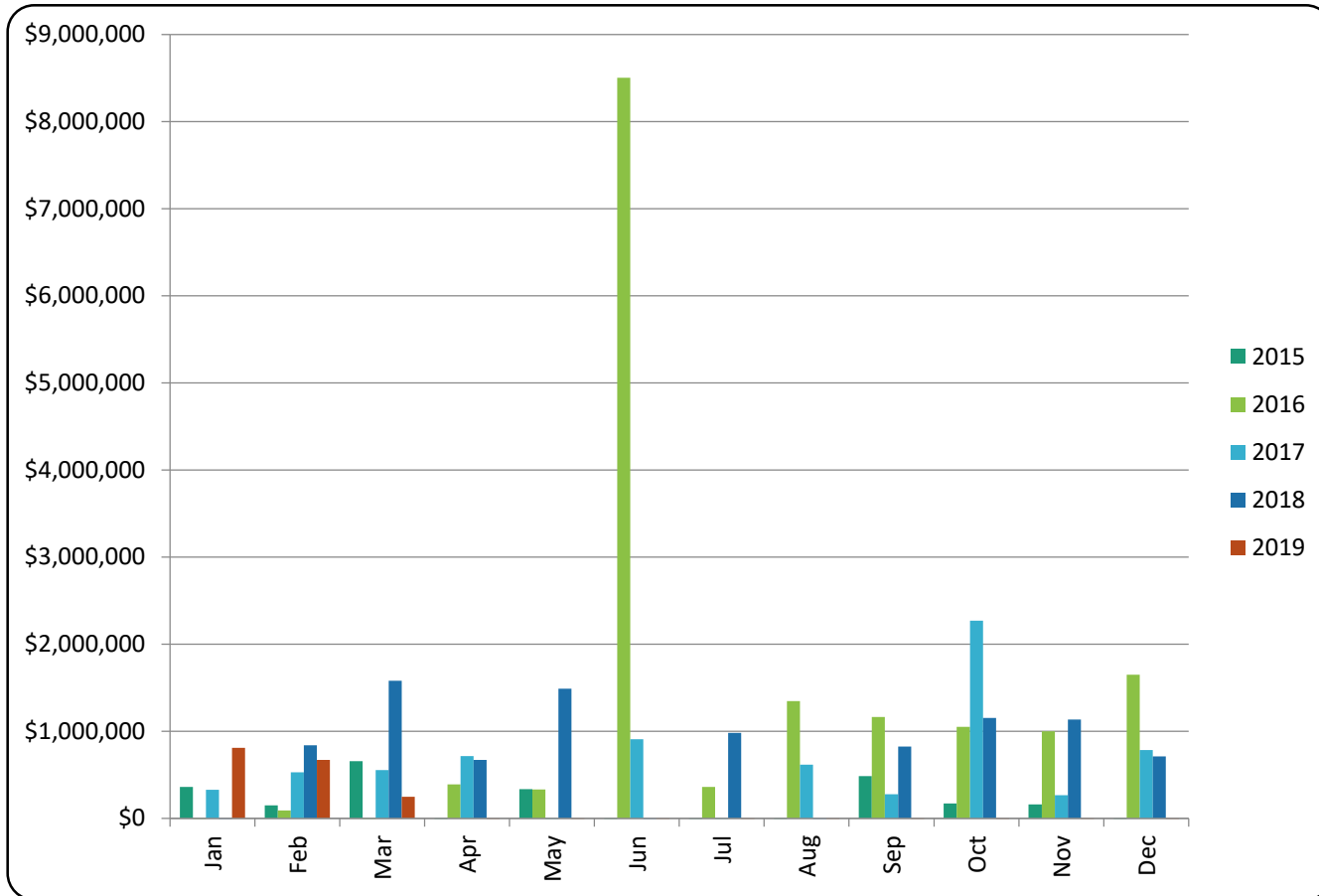


Pemberton Townhomes - Transactions





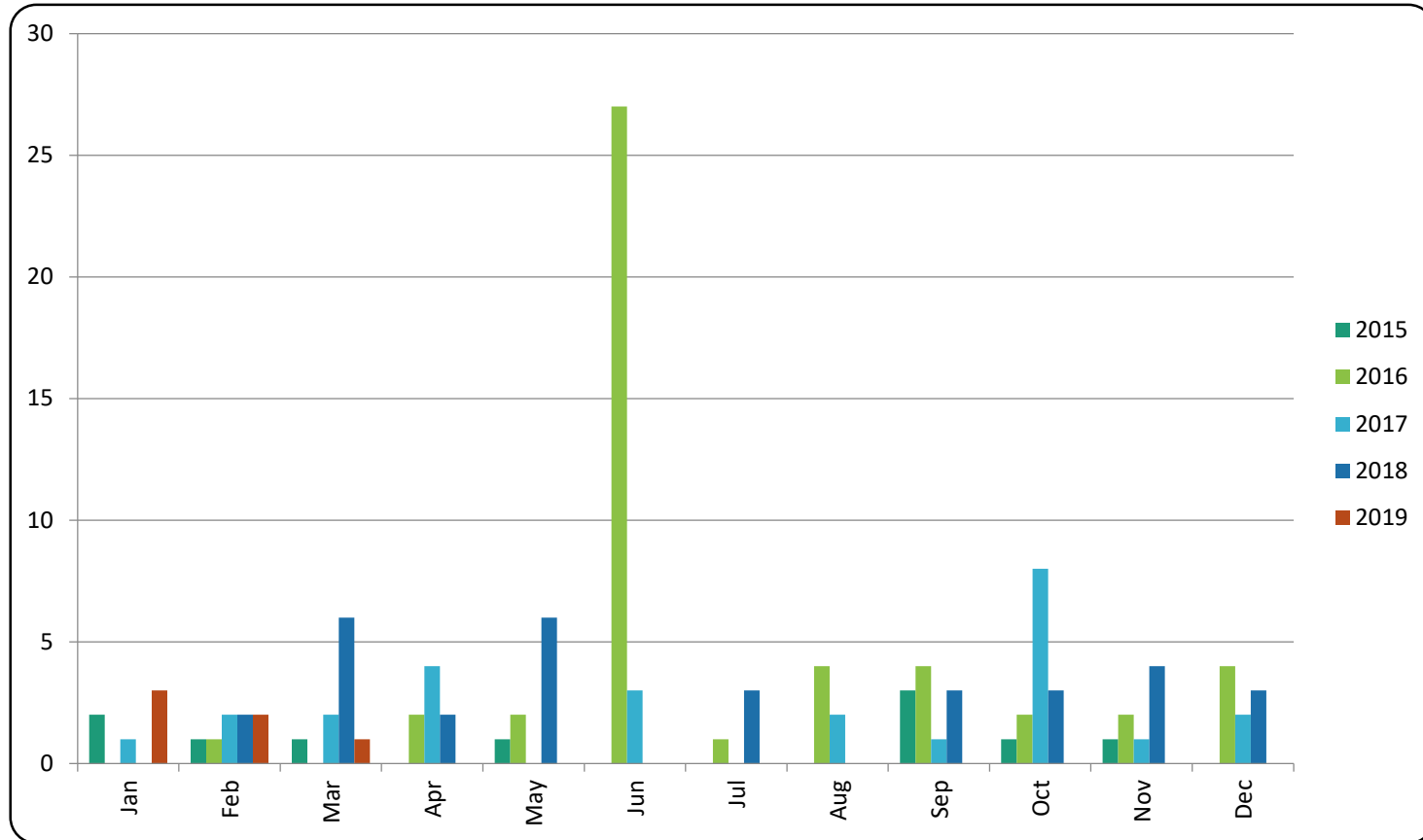
Pemberton Vacant Land - \$ Volume



All sales information is derived from the Whistler Listing Service and is believed correct. E&OE

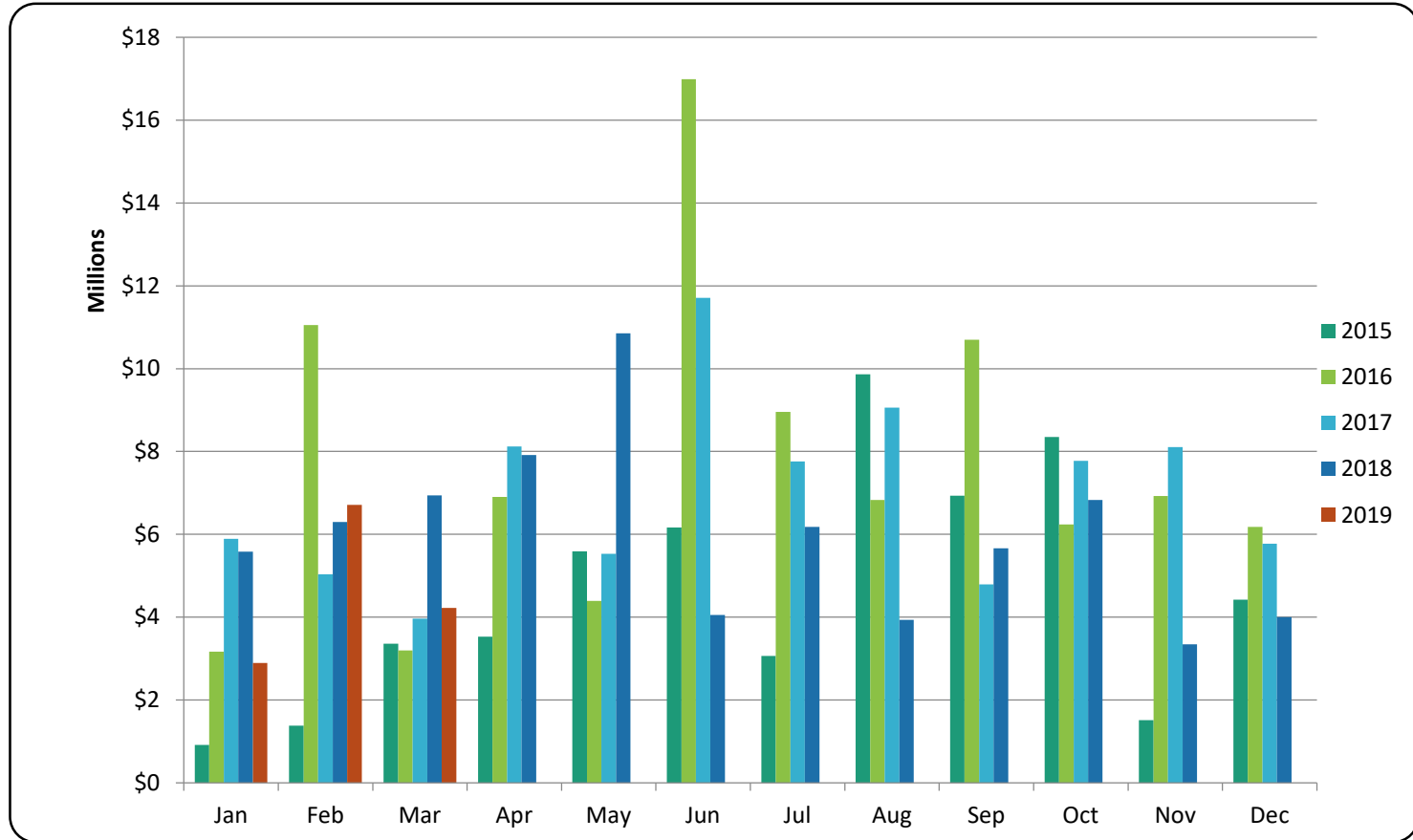
March 2019

Pemberton Vacant Land - Transactions



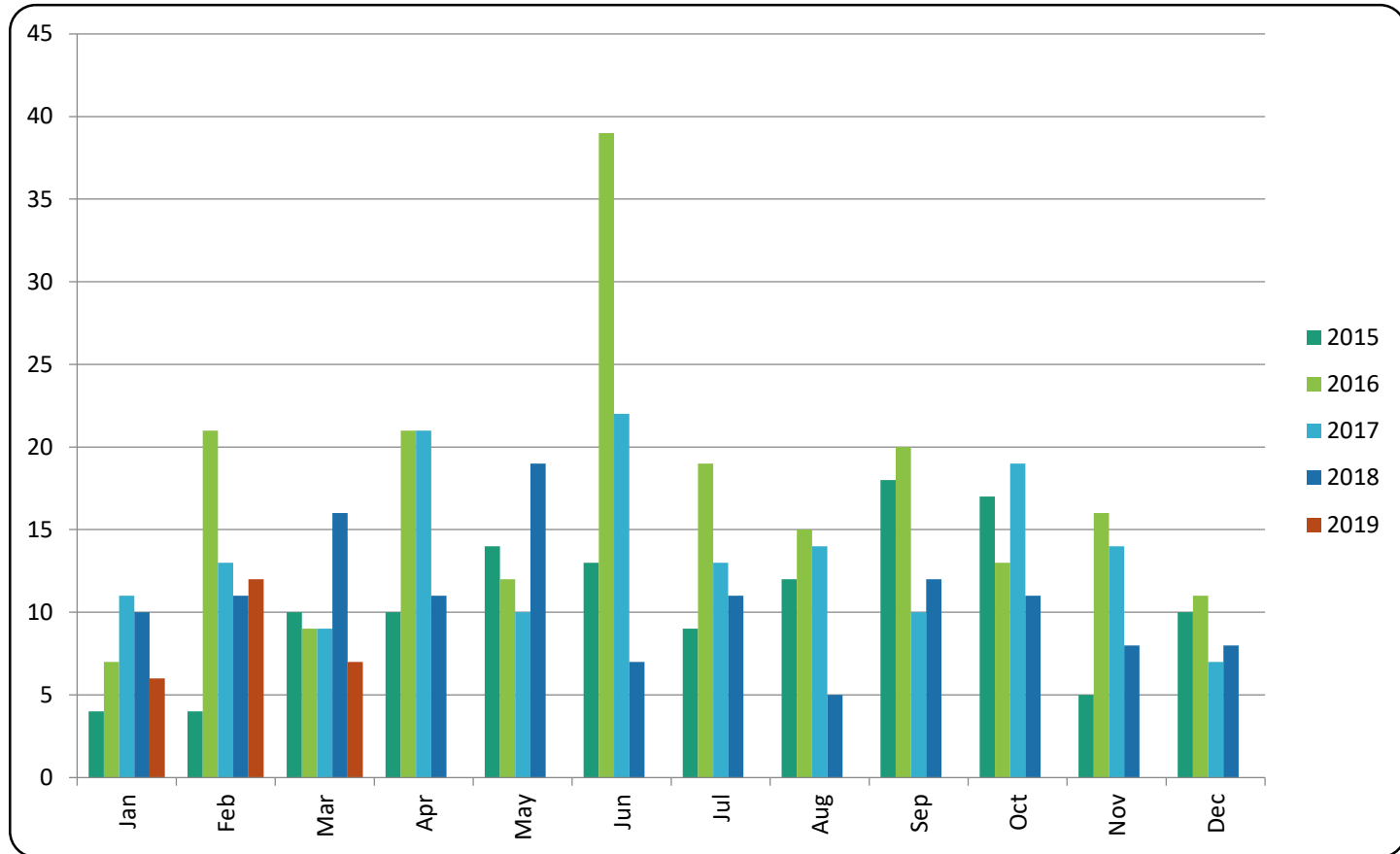


Pemberton Totals - \$ Volume





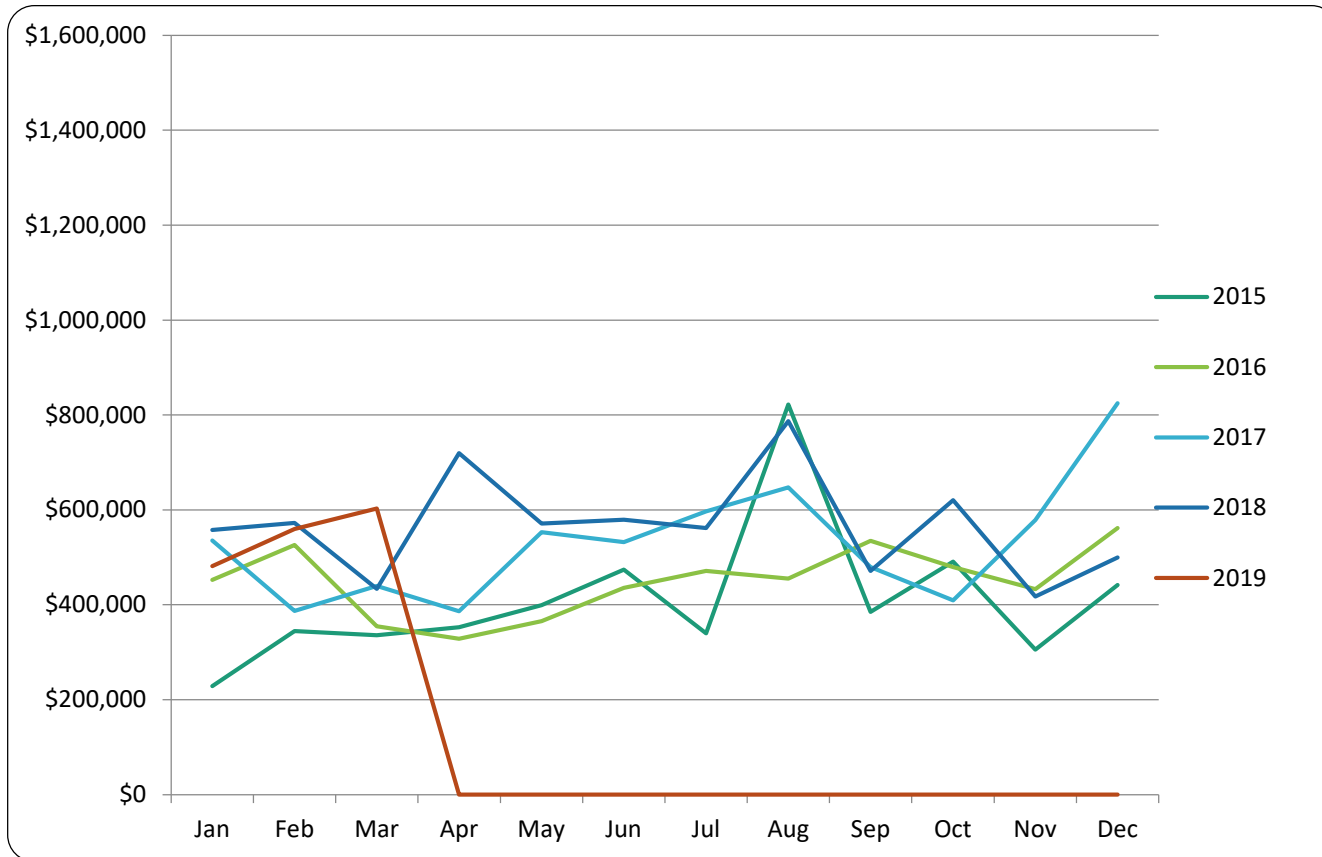
Pemberton Totals - Transactions





RE/MAX
SEA TO SKY
REAL ESTATE
INDEPENDENTLY OWNED AND OPERATED

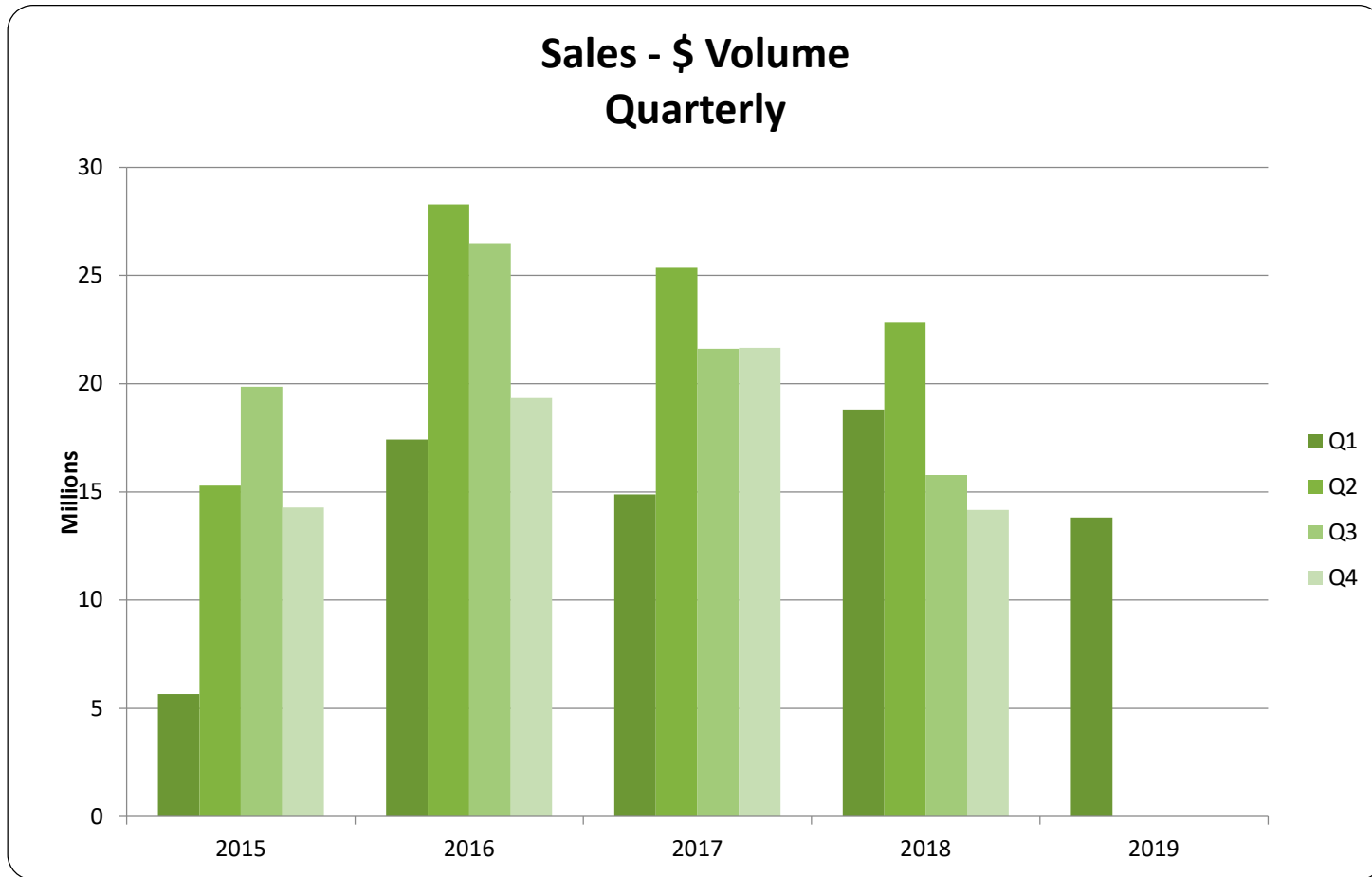
\$ Average - Quarterly



Please note this chart does not indicate property value trends, only the average price of properties that actually sold for that quarter.

All sales information is derived from the Whistler Listing Service and is believed correct. E&OE

March 2019



Sales - # of Transactions Quarterly

