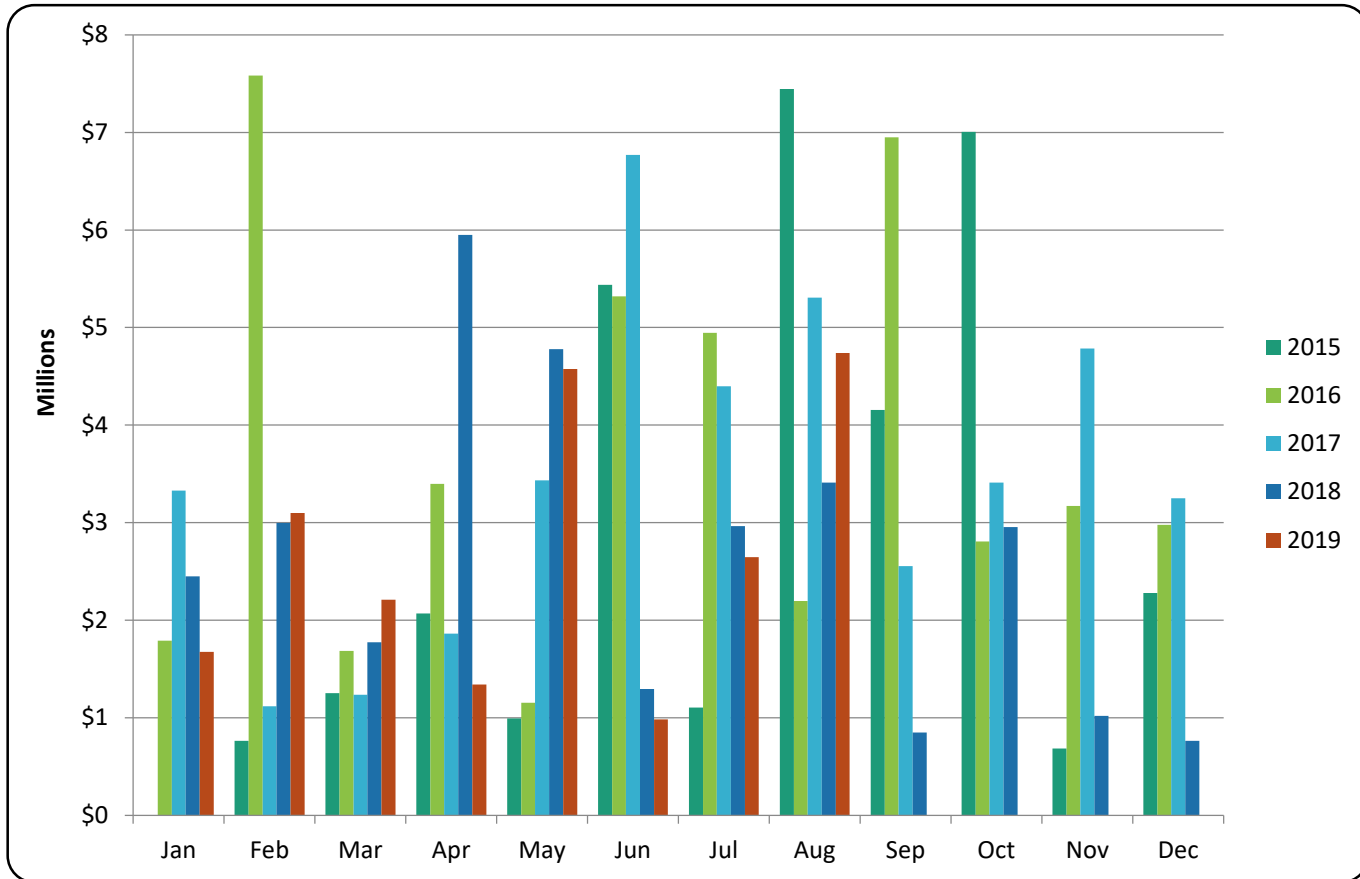




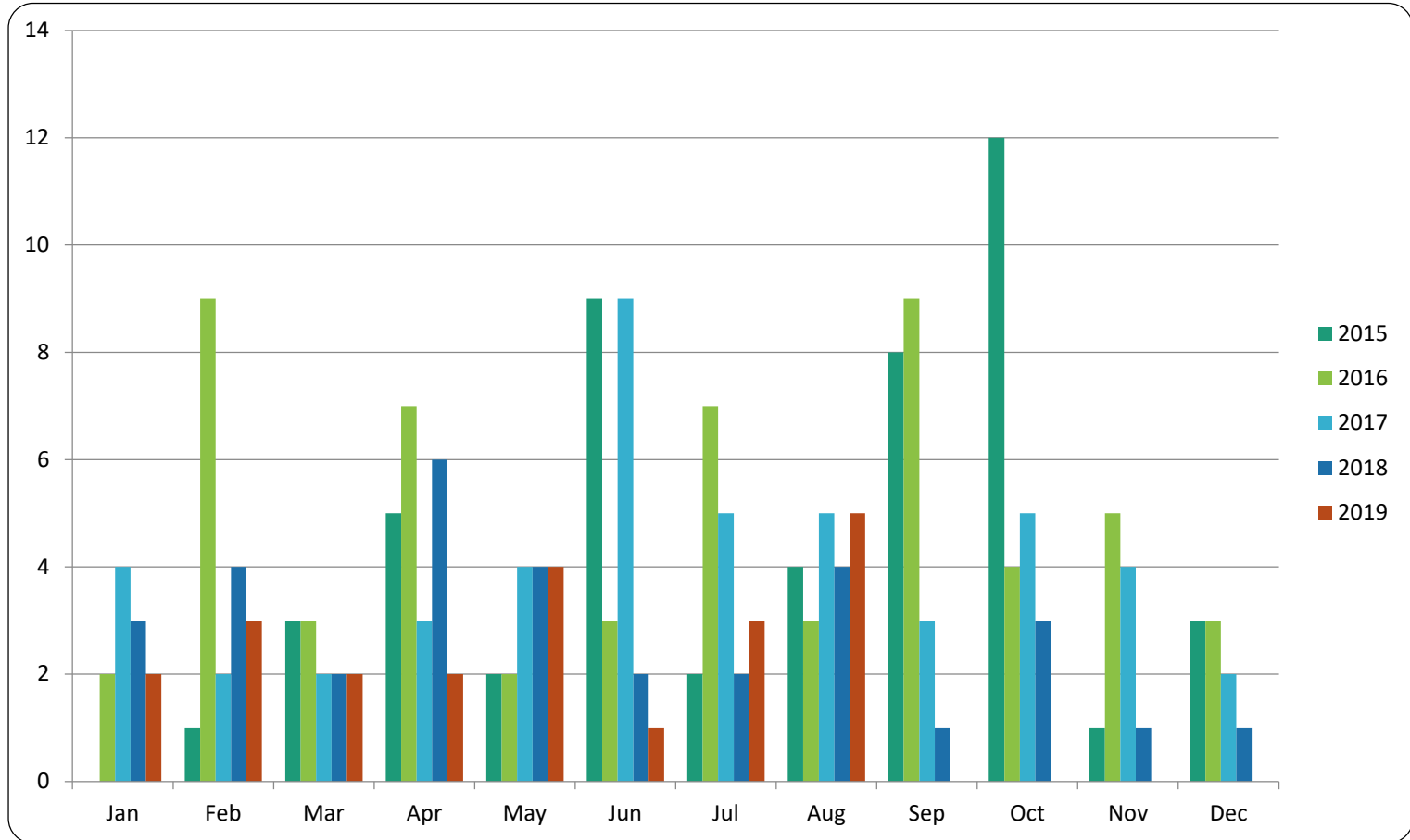
RE/MAX
SEA TO SKY
REAL ESTATE
INDEPENDENTLY OWNED AND OPERATED

Pemberton Chalets - \$ Volume



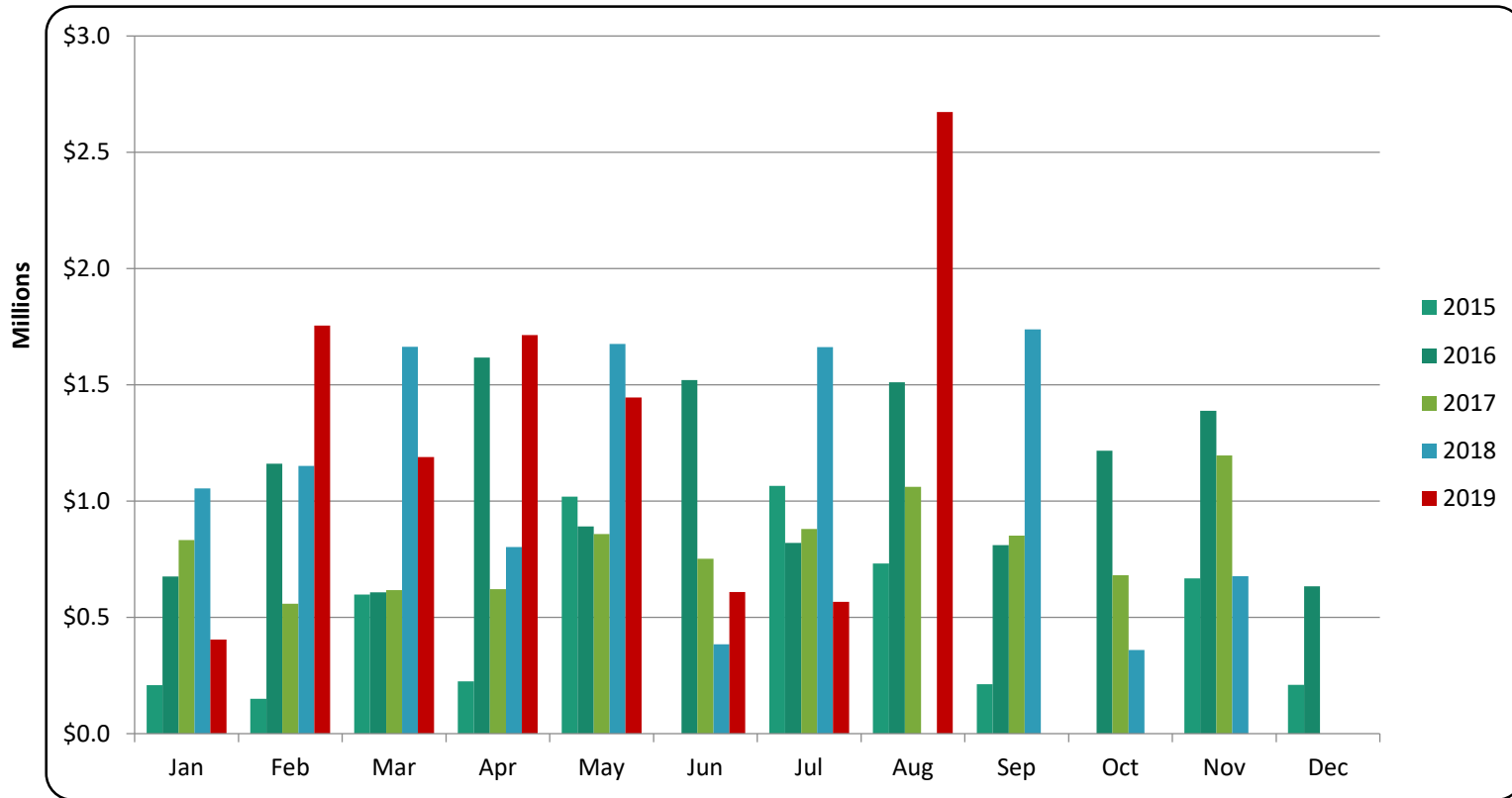


Pemberton Chalets - Transactions



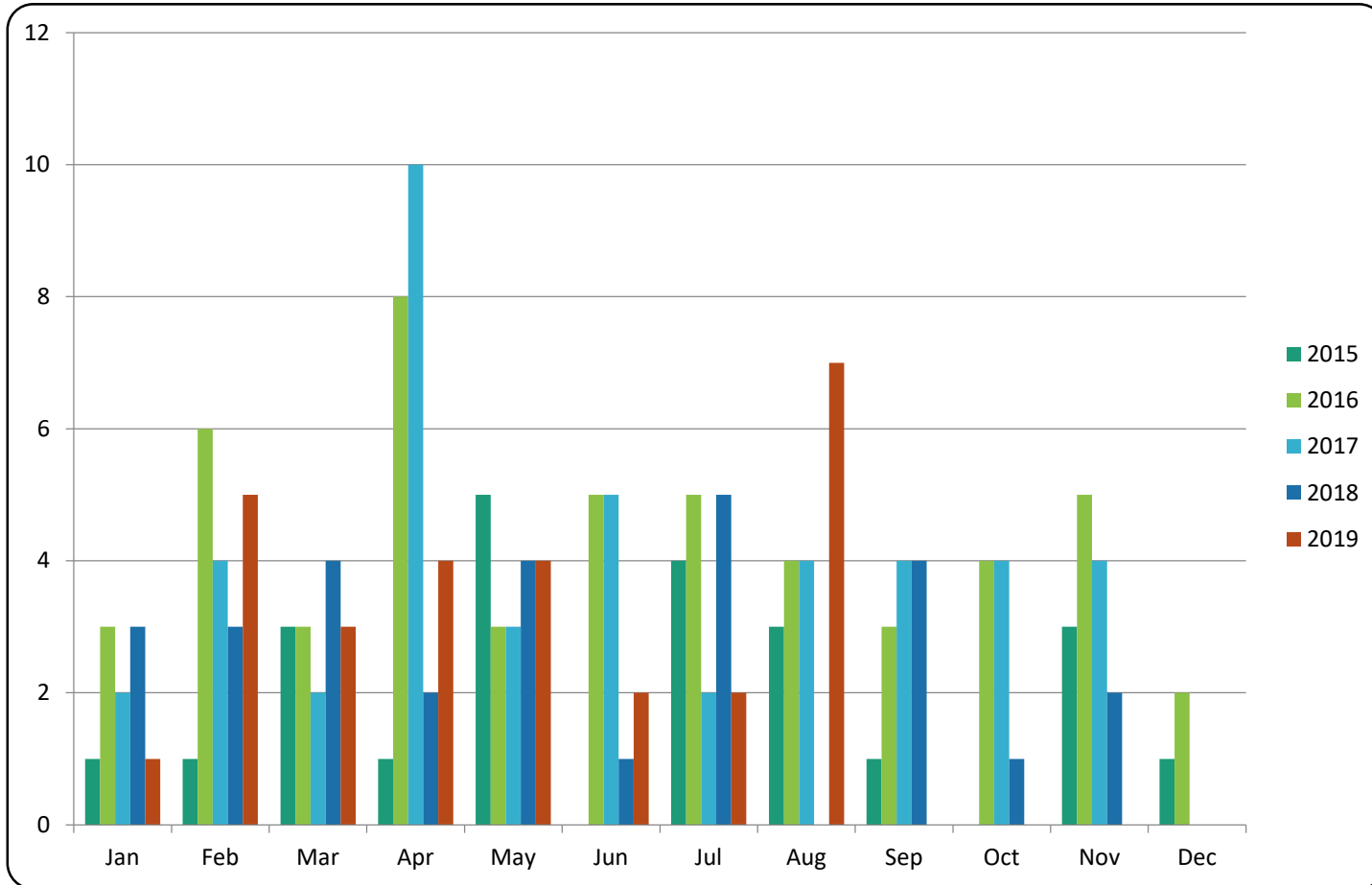


Pemberton Condos - \$ Volume



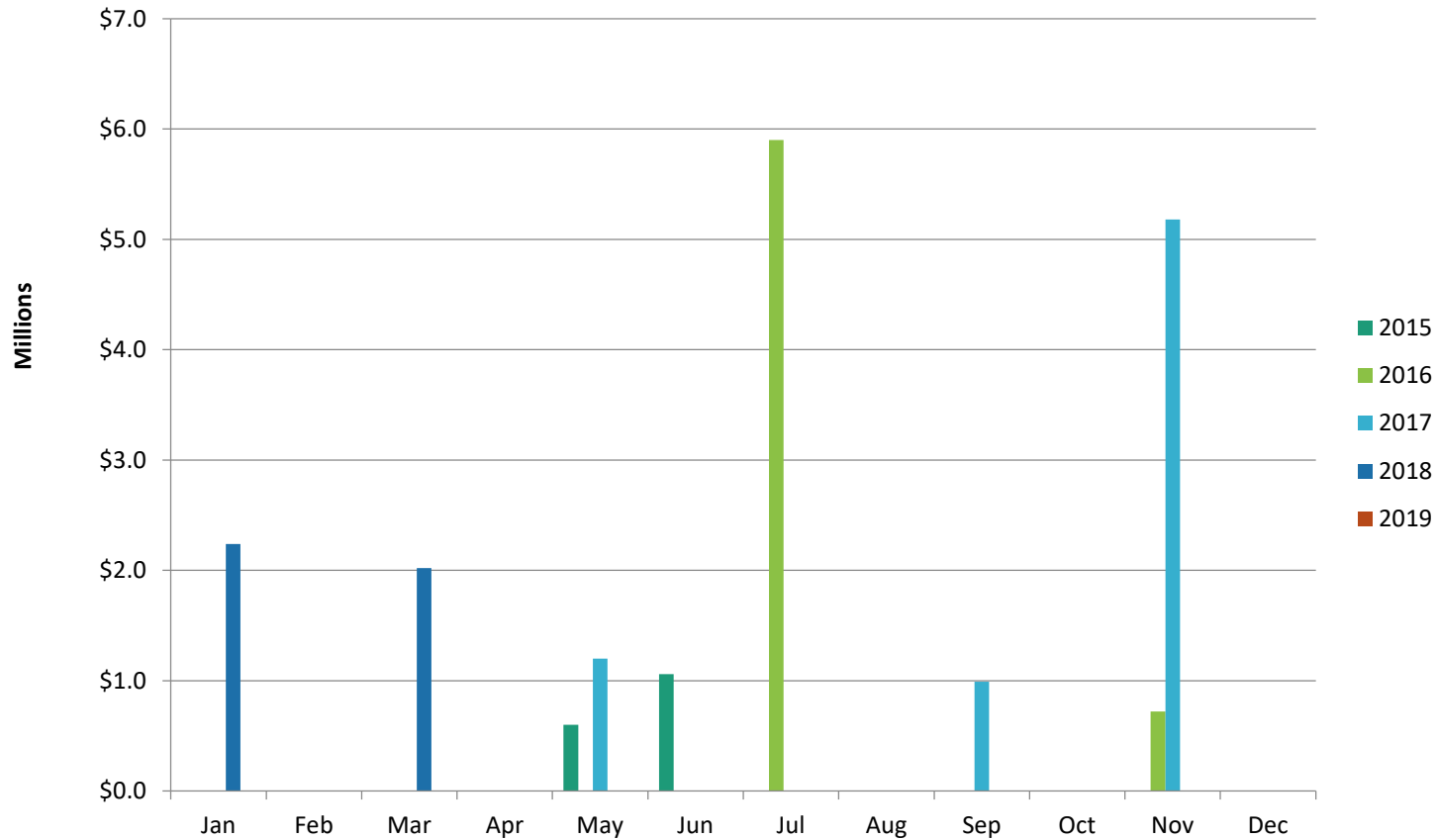


Pemberton Condos - Transactions

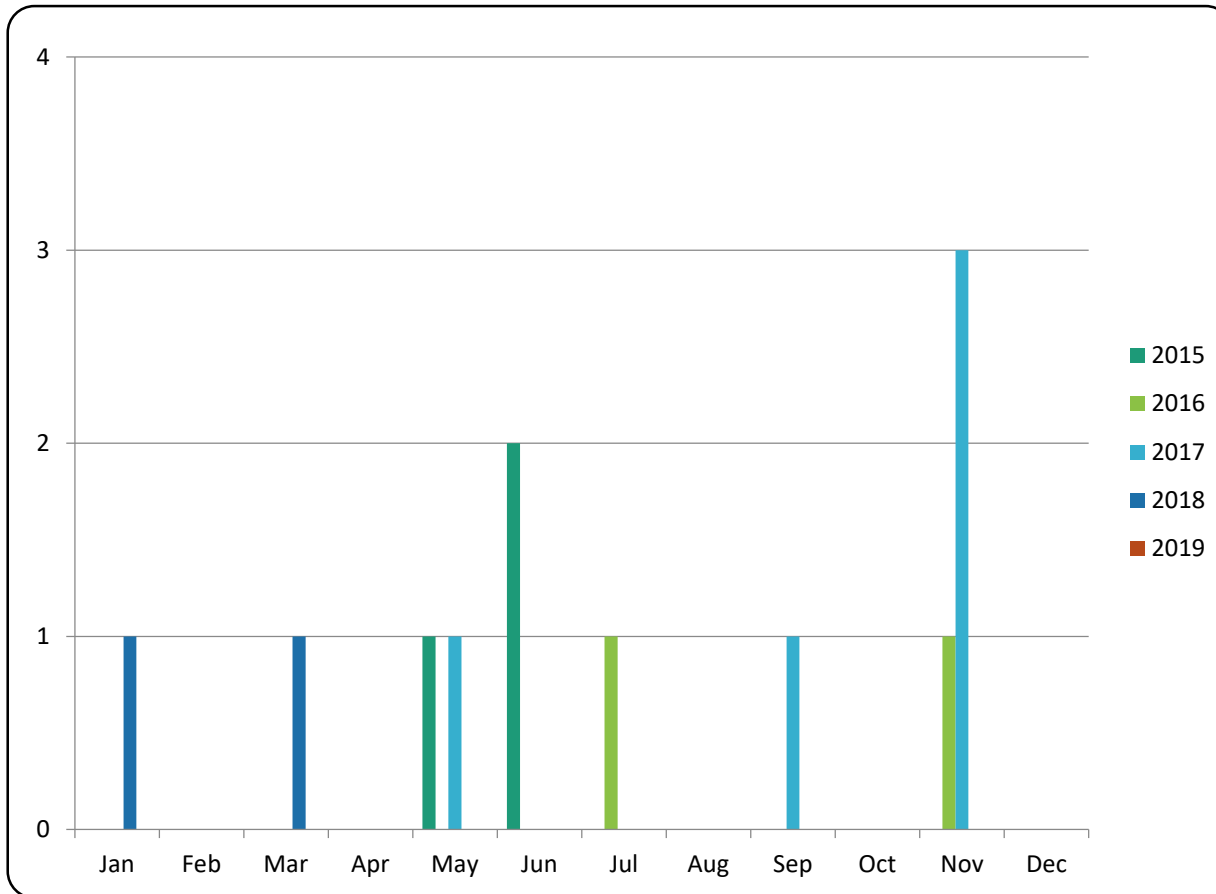




Pemberton Mobile Homes - \$ Volume

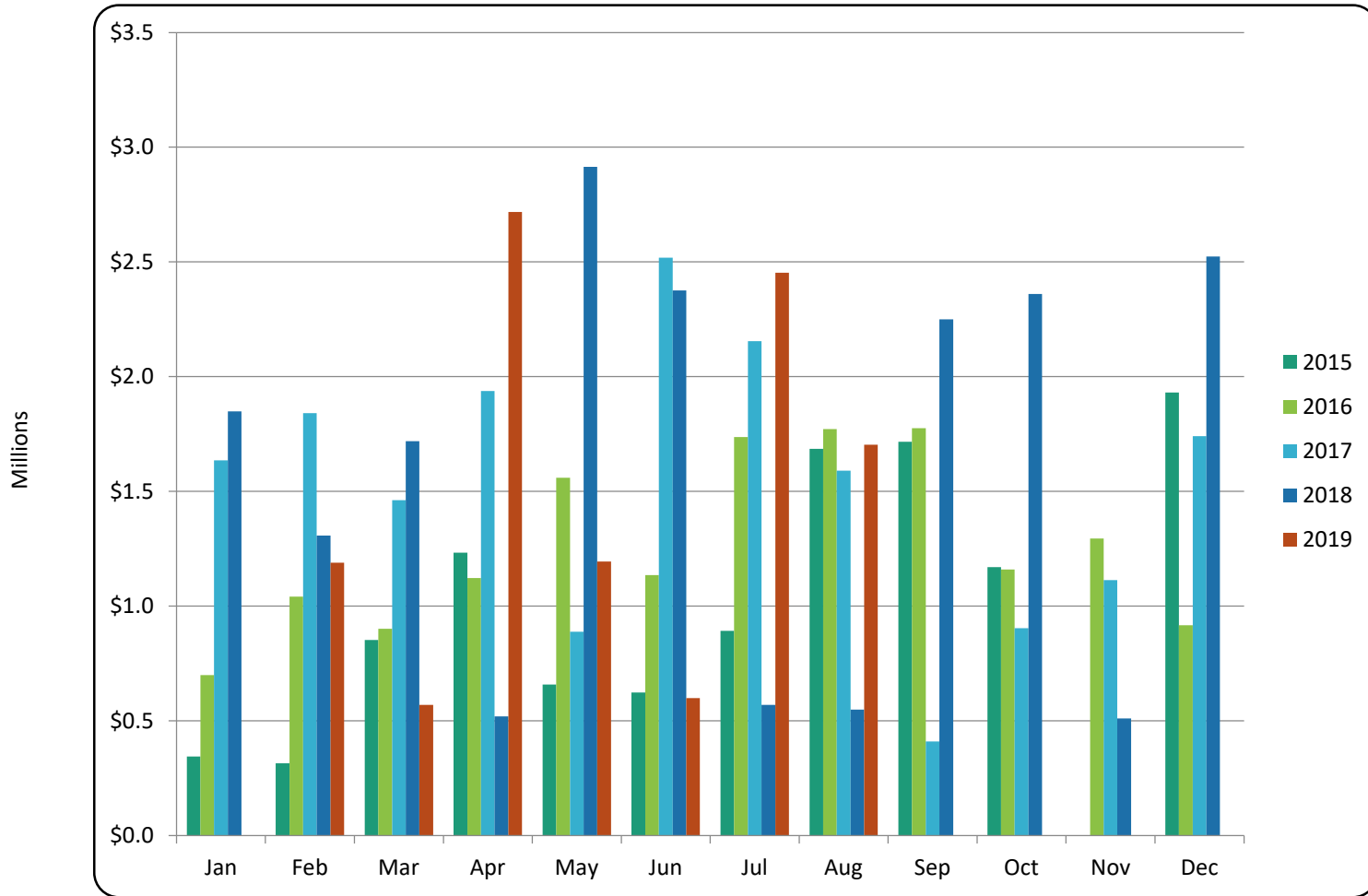


Pemberton Mobile Homes - Transactions

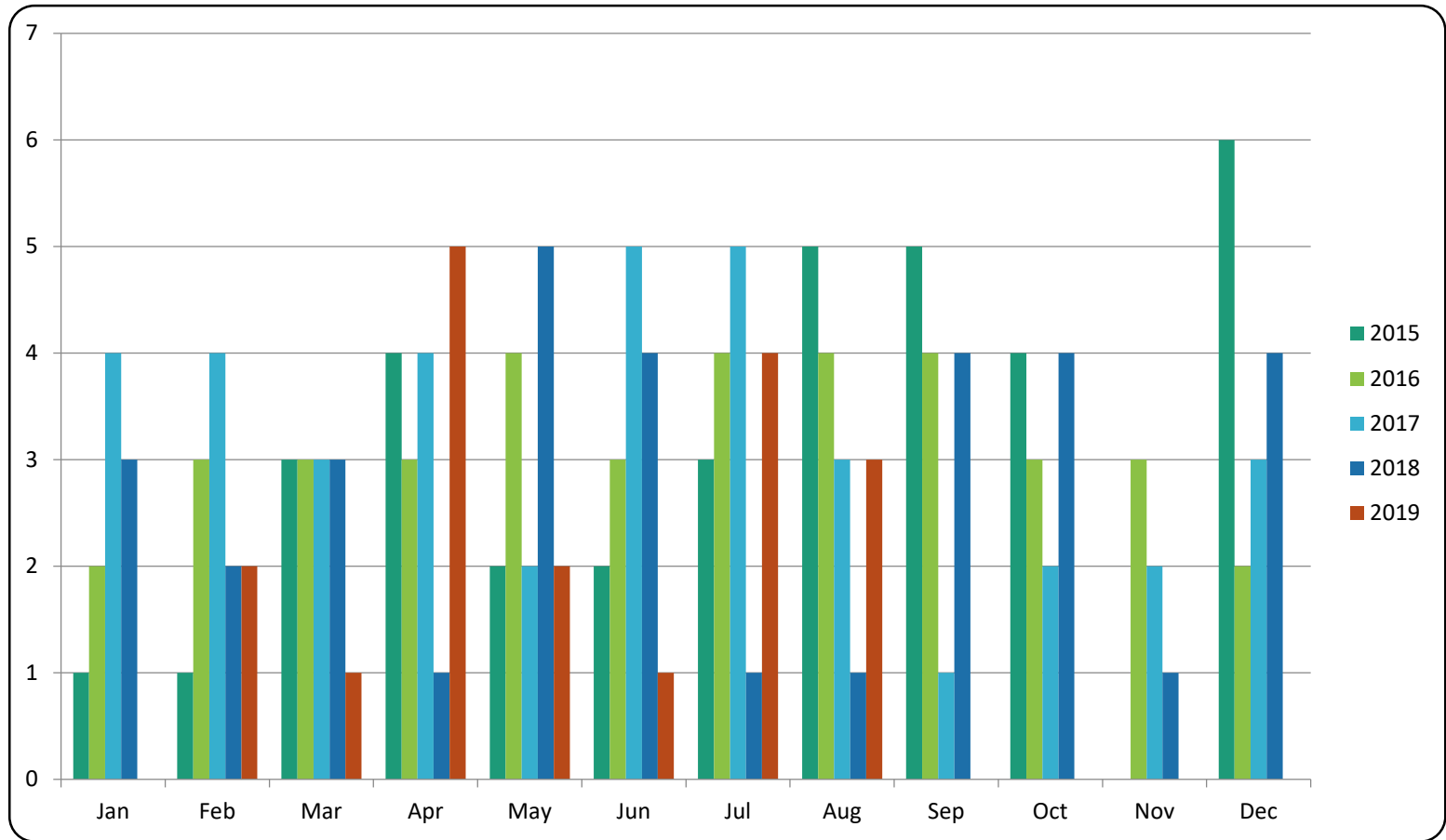




Pemberton Townhomes - \$ Volume

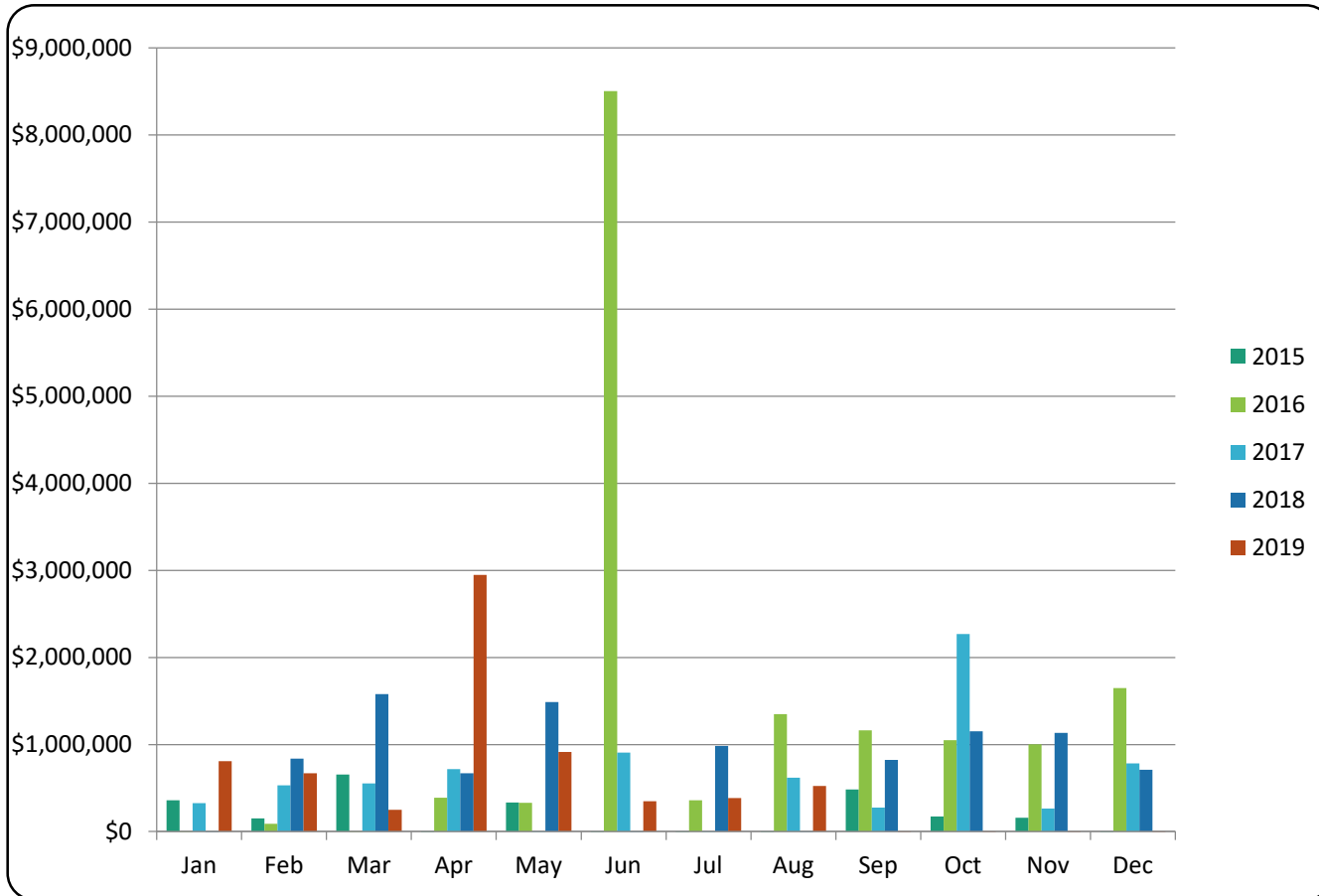


Pemberton Townhomes - Transactions





Pemberton Vacant Land - \$ Volume

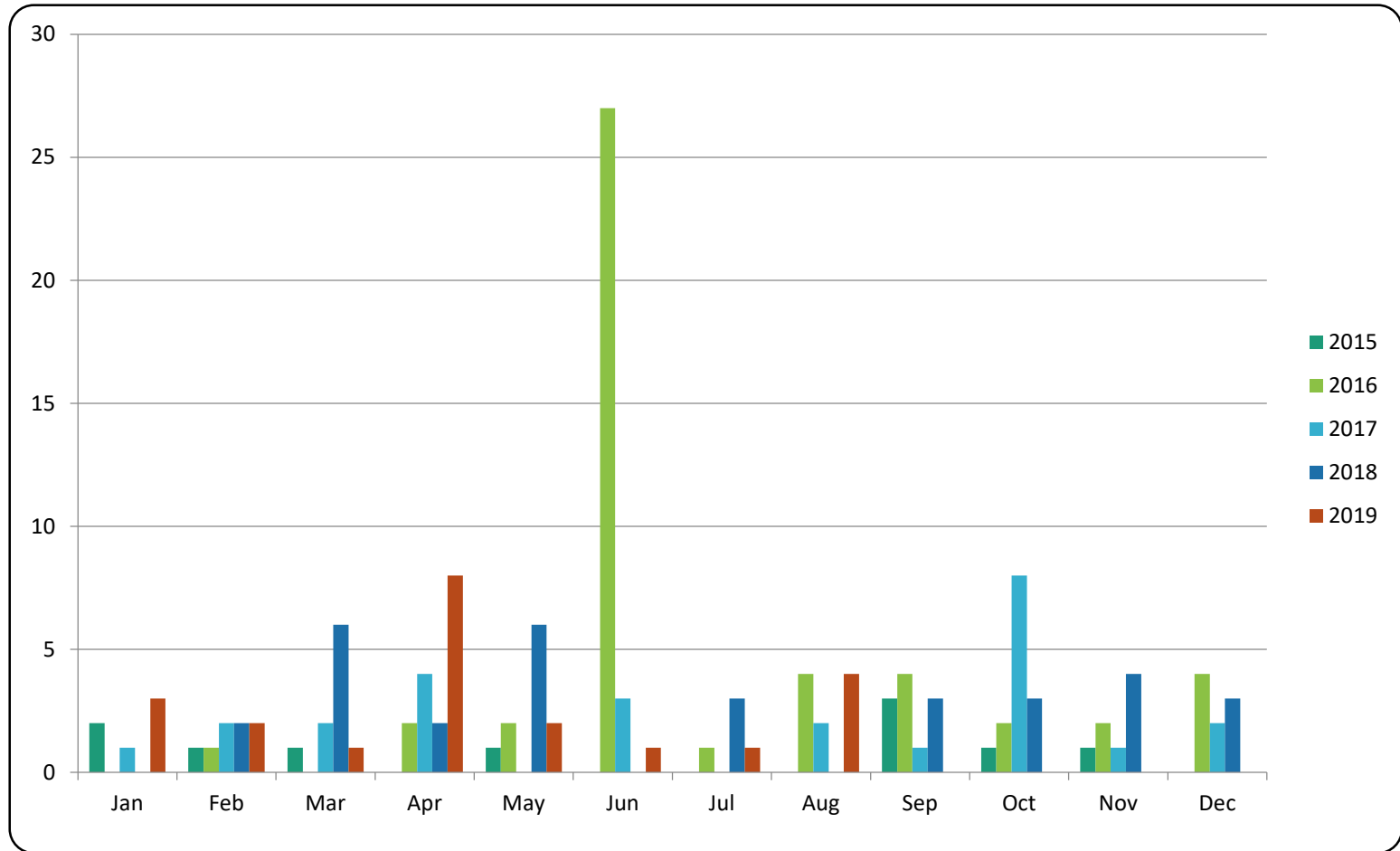


All sales information is derived from the Whistler Listing Service and is believed correct. E&OE

August 2019

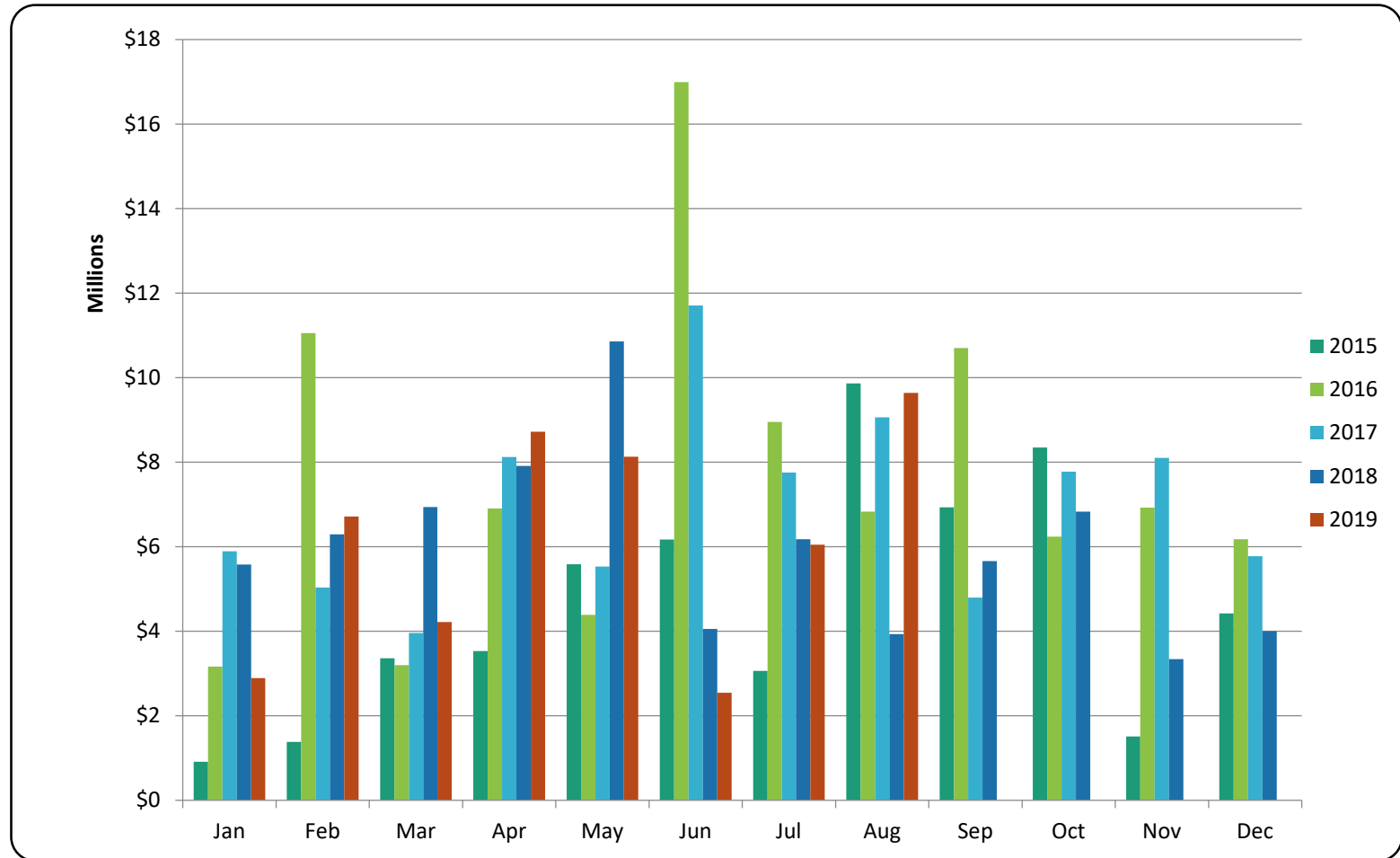


Pemberton Vacant Land - Transactions

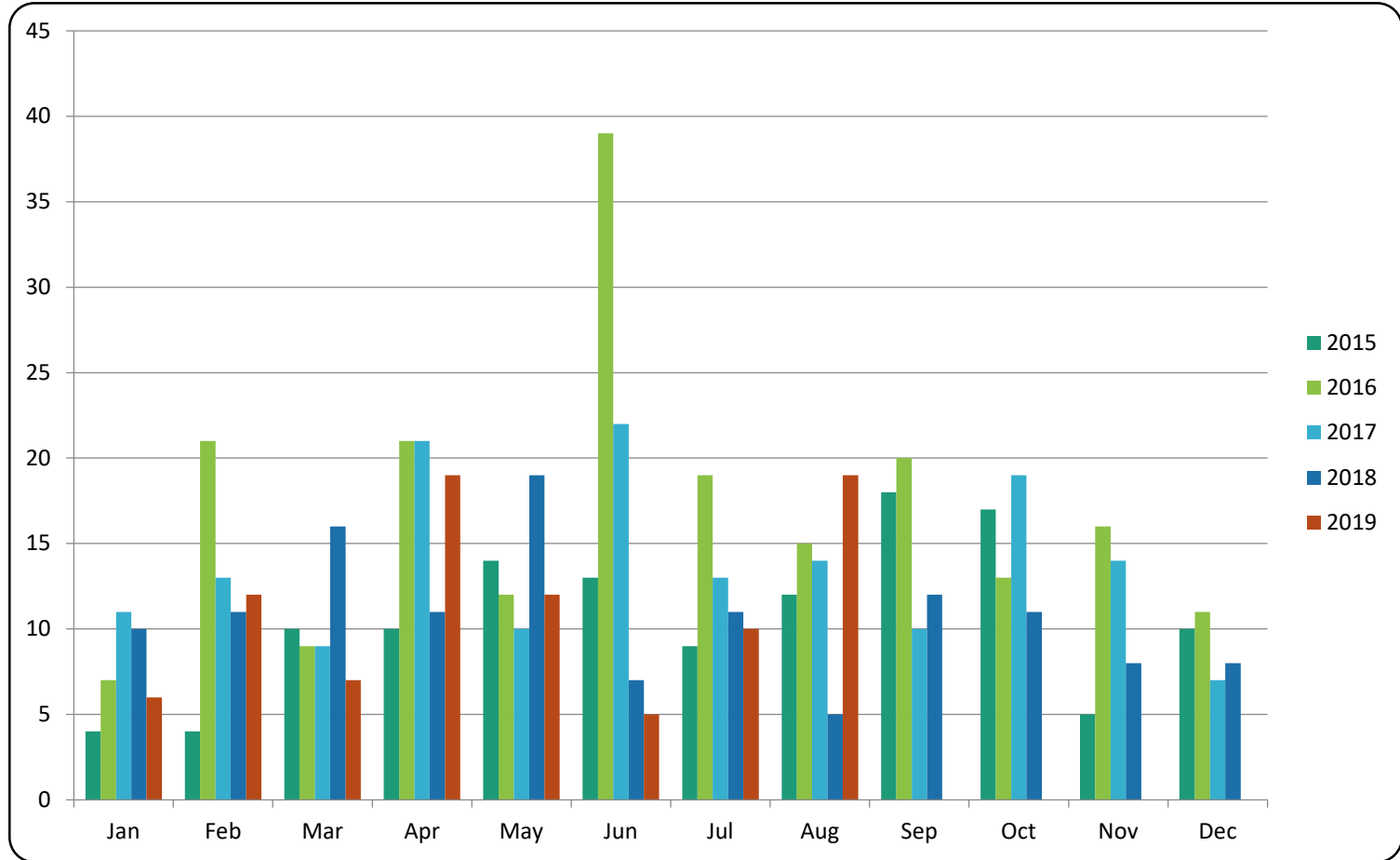




Pemberton Totals - \$ Volume



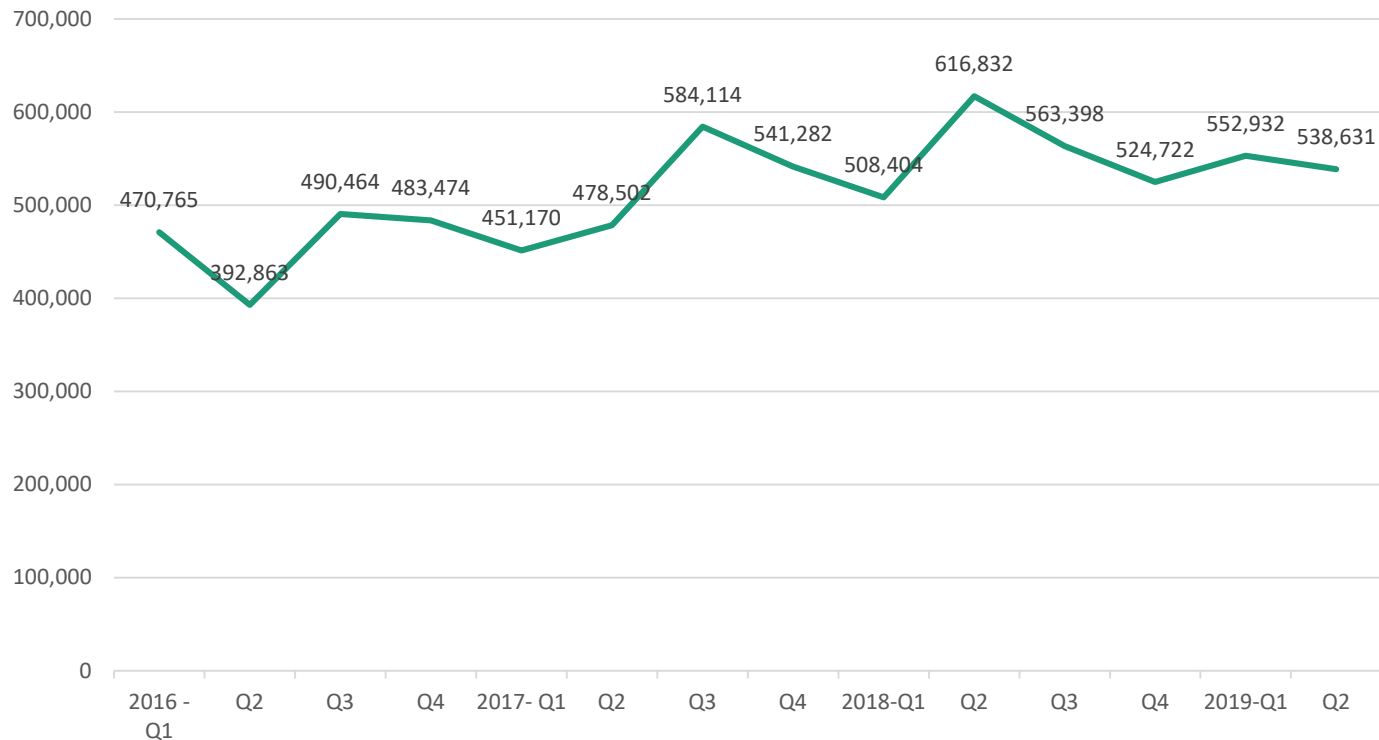
Pemberton Totals - Transactions





RE/MAX
SEA TO SKY
REAL ESTATE
INDEPENDENTLY OWNED AND OPERATED

\$ Average - Quarterly



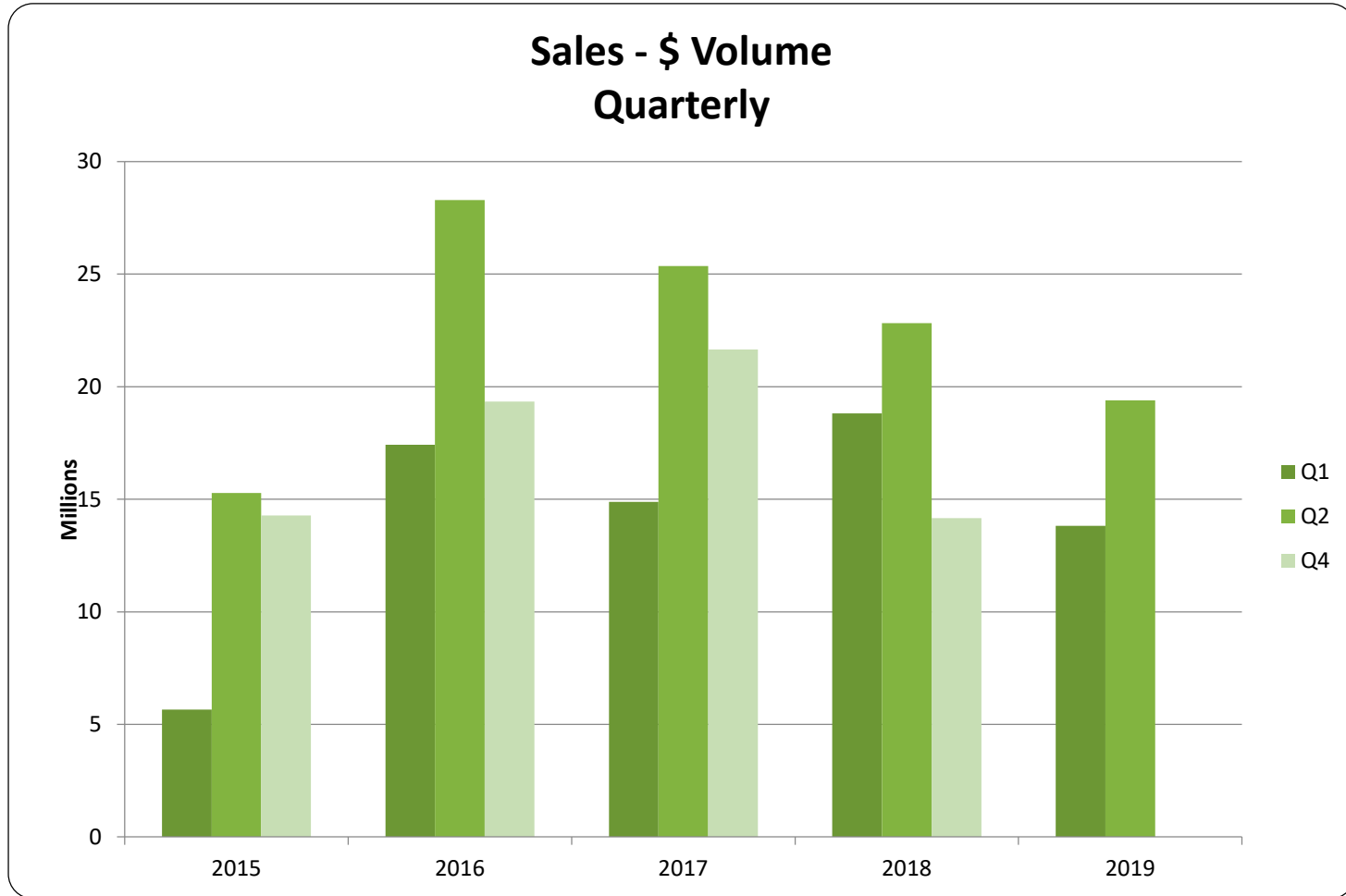
Please note this chart does not indicate property value trends, only the average price of properties that actually sold for that quarter.

All sales information is derived from the Whistler Listing Service and is believed correct. E&OE

August 2019



RE/MAX
SEA TO SKY
REAL ESTATE
INDEPENDENTLY OWNED AND OPERATED





Sales - # of Transactions Quarterly

